



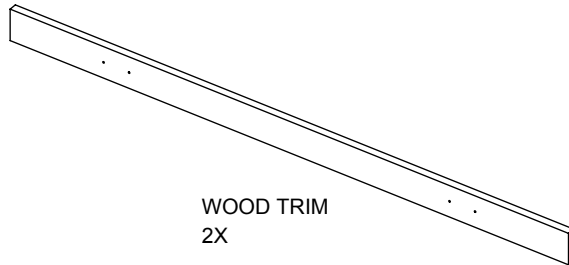
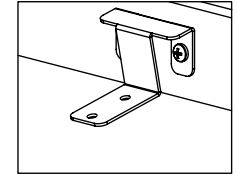
SHELF TRIM KIT

assembly instructions

ITEM NO.	PART NUMBER	TITLE	QTY.
1	1537808507	SHELF TRIM FACE BRACKET	2
2	1038404119	36" SHELF FACE TRIM BOARD	1
3	#10x0.250 PH WS	PHILLIPS PAN HD WOOD SCREW	4
4	#10-24 x 0.375 MACHINE SCREW	#10-24 x 0.375 MACHINE SCREW	4
5	#10-24 HEX KEP NUT		4

STEP 1

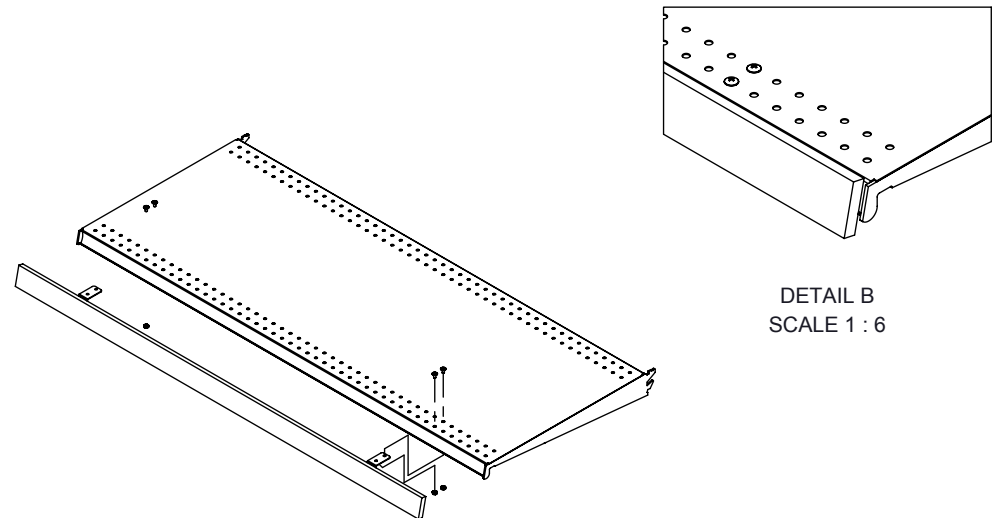
INSTALL 2 METAL BRACETS TO THE REAR SIDE (SIDE WITH HOLES) OF THE WOOD TRIM. 2 WOOD SCREWS PER BRACKET



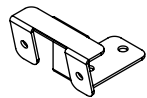
WOOD TRIM
2X

STEP 2

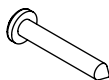
ATTACH TRIM WITH BRACKETS TO THE FRONT OF METAL SHELF USING MACHINE SCREWS & KEPS NUTS PROVIDED. THE METAL BRACKET FROM STEP 1 RESTS ON THE TOP SURFACE OF THE METAL SHELF AS SHOWN. TIGHTEN NUTS FROM UNDER SHELF.



DETAIL B
SCALE 1 : 6



METAL BRACKET
2X



WOOD SCREW
4X



MACHINE SCREW
4X



KEPS NUT
4X