



1 OR 2 SIDED HANG KIT

assembly instructions

Includes:

1/16" Aircraft cable
(10' long) - 2 pcs



S-Hooks - 4 pcs



Ceiling Grid
Spanner
Bar - 1 pc



1/16" Self-locking
Cable Adjuster - 4 pcs



Metal Ceiling
Clips - 2 pcs



DGS Retail may not be held responsible nor liable for damages or injuries resulting from improperly installed signs. We highly recommend retaining the services of an experienced contractor for hanging signs. Please be aware that we include hanging hardware that is appropriate for some ceilings but not necessarily all ceilings. If you are unsure of how to install signs or require alternate hanging hardware please contact us for assistance at 1-800-211-9646.

STEP 1

Locate general placement of hanging sign according to floor plan & unpack all hardware from kit.

STEP 3

Determine if the hanging sign location will line up with the existing ceiling grid (measure center to center the holes on the sign to determine the cable spacing and location on the ceiling). If yes, proceed to next step. If it does not line up with existing ceiling grid, use the included ceiling Grid Spanner Bar. To install, insert 1 notched end over the existing ceiling grid bar and rotate the second end into place



STEP 4

Attach 2 metal ceiling clips to the ceiling grid bars at the same length dimension as the center to center hole spacing on the sign. Press firmly against the ceiling grid and twist into place (See Image 4-A). (Note: metal tabs will deflect with pressure to allow the clip to engage).

STEP 5

Attach 2 S-Hooks to the 2 ceiling clips

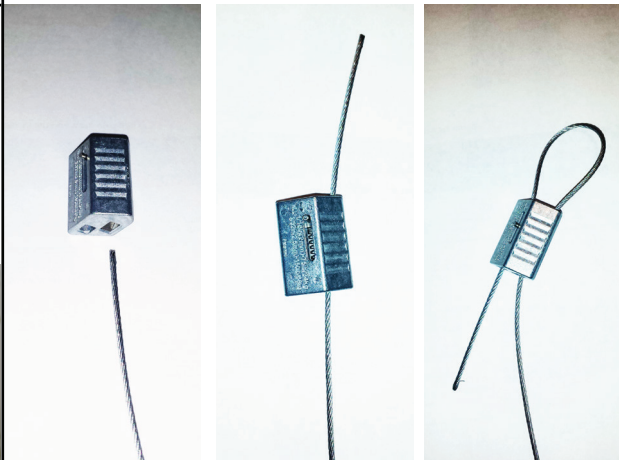
STEP 6

Hang the 2 cables from step 2 from the 2 S-Hooks in step 5



STEP 2

Thread 1 10' steel cable thru 2 self-locking cable adjuster to form a small loop on both ends of the cable. Repeat for the 2nd steel cable. (Note: height adjustment happens in later step)



STEP 7

Determine desired sign height and pull the end of the cable through the cable adjuster to raise it up to the height you want the top of the sign to be, keeping an open loop on the end (Note: You may adjust up or down after initial placement if needed).

STEP 8

Attach 2 S-Hooks through the 2 hang holes on the sign. Lift sign and attach the 2 S-Hooks to the hanging end loops of the 2 cables from step 7. (May require 2 people for wider signs)

STEP 9

If the set height is not desired, adjust the cable adjusters (by depressing the lever) to adjust the sign up or down by pulling the wire through the adjuster.

STEP 10

Using a wire cutter or tin snips, cut off any excess steel cable.

COMPLETED ASSEMBLY

