



# PRODUCE DISPLAY TABLE

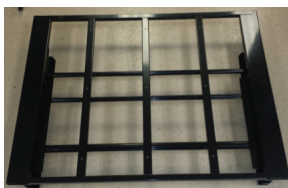
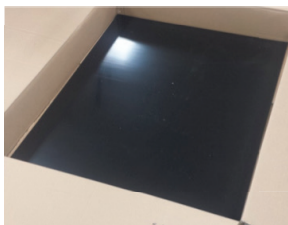
## assembly instructions

### Parts List:

- 4 – Leg Assembly
- 4 – Casters
- 1 – Hardware Bag
- 1 – Table Top Subassembly
- 1 – Table Bumper Trim (With Bumper)
- 1 – Table Front Trim
- 2 – Support Bar
- 1 – Plastic Topper
- 1 – Screw Driver
- \* 7/16" wrench not included (if necessary)

### Optional Contents

- 1 – Custom Stained Wood Trim Kit & Hardware



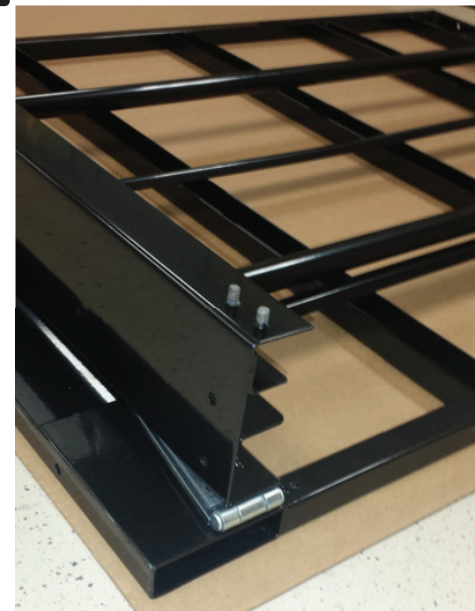
### STEP 1

Install 4 casters into 4 leg assemblies



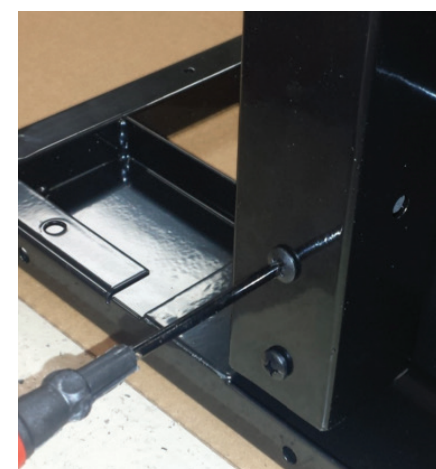
### STEP 2

Place Table Top Assembly on a flat surface and upside down (the threaded studs will be facing upwards)



### STEP 3

Install the leg assembly (wheel side up) lining up the L bracket holes on the leg to the threaded studs of the Top Assembly. Secure with 2 large keps nuts. (\*May need 7/16 wrench, not included). Next install 2 long screws through the outside of the leg into the inside of the Table Top SubAssembly and secure with 2 large keps nuts.



# PRODUCE DISPLAY TABLE

## assembly instructions

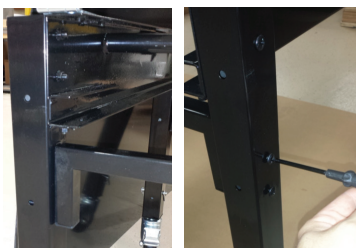
**STEP 4**

Repeat step 3 to install the remaining 3 Leg Assemblies to the Table Top Subassembly. Then Flip the unit over so that its upright and resting on the casters. Lock the casters so that the table is stationary for the remaining steps.



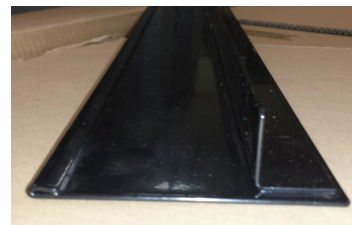
**STEP 5**

Install 2 Support Bars, one on the front of Table Top Subassembly and one on the rear, using 4 long screws for each bar. Insert the bars in between the leg assemblies and screw in from the outside of the leg.



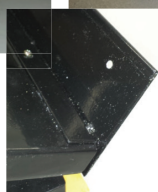
**STEP 6**

Install the Table Front Trim to the front, top face of the Table Top Subassembly using 4 flat head screws & 4 small keps nuts. (Note: See step 6-A for image of wood trim if you ordered the trim package add-on)



**STEP 6a**

If you ordered the wood trim package, the table Front Trim will look like this image. Mounting method to the Table Top Subassembly is the same as Step 6. After attaching the Table Front Trim, attach the wood front trim using 5 small screws, thru the metal and into the pilot holes on the rear of the wood trim.



**STEP 7**

Install the Table Bumper Trim to the front face of the Subassembly thru the 2 front Leg assemblies using 2 large screws & 2 large keps nuts (1 per side). (Note: See step 7-A for image of wood trim if you ordered the trim package add-on)



**STEP 7a**

If you ordered the wood trim package, the Table Bumper Trim will look like this image. Mounting method is the same as Step 7.





# PRODUCE DISPLAY TABLE

## assembly instructions

- STEP 8** Remove the 2 safety screws and nuts from the adjustable bracket on the Table Top Subassembly and discard. Lift up the table to the desired angle and seat the adjustable bracket securely onto the round tube support.



- STEP 9** Add the Plastic Topper to the angled frame (no hardware needed).

